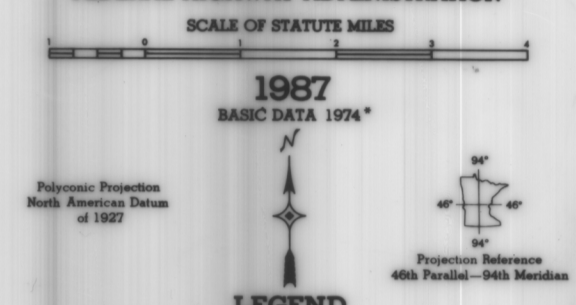


# GENERAL HIGHWAY MAP CROW WING COUNTY MINNESOTA

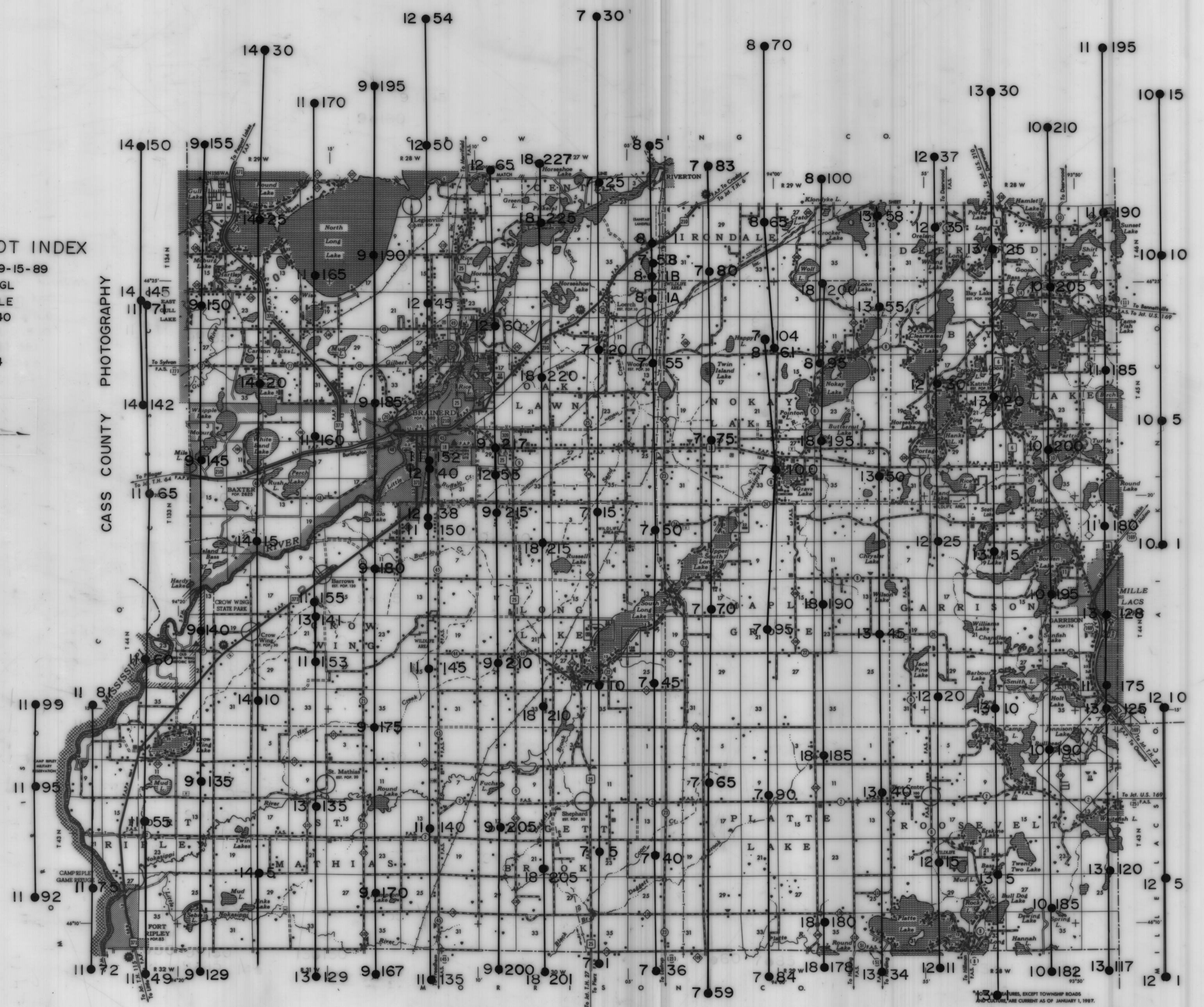
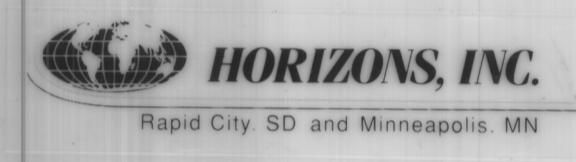
PREPARED BY THE  
MINNESOTA DEPARTMENT OF TRANSPORTATION  
TECHNICAL SERVICES DIVISION  
IN COOPERATION WITH THE  
U.S. DEPARTMENT OF TRANSPORTATION  
FEDERAL HIGHWAY ADMINISTRATION



ROAD AND ROADWAY FEATURES	NAVIGATION
TRAIL (UNIMPROVED)	SHOALS
UNIMPROVED ROAD	SHOALS ON MAIN LAKES
ROAD UNDER CONSTRUCTION	SHOALS ON OTHER LAKES
ROAD UNDER CONSTRUCTION - BRIDGE	SHOALS ON OTHER LAKES
ROAD UNDER CONSTRUCTION - TUNNEL	SHOALS ON OTHER LAKES
ROAD UNDER CONSTRUCTION - TUNNEL	SHOALS ON OTHER LAKES
ROAD UNDER CONSTRUCTION - TUNNEL	SHOALS ON OTHER LAKES

## CROW WING COUNTY SPOT INDEX

LAST DATE OF PHOTOGRAPHY: 9-15-89  
FLIGHT HEIGHT: 7,920 AGL  
MAP SCALE: 1/2" = 1 MILE  
PROJECT SCALE: 1:15,840  
FOCAL LENGTH: 153.361  
CAMERA NUMBER: 111692  
FILM TYPE: KODAK 2424



NOTES FOR SERIAL OF COUNTY STATE AND HIGHWAYS AND COUNTY ROADS IN INCORPORATED PLACES, SEE MAP OF MUNICIPALITIES.

All photos filed with "Cass, Crow Wing & Wadena Counties, 1989" project in photo negative section.

